

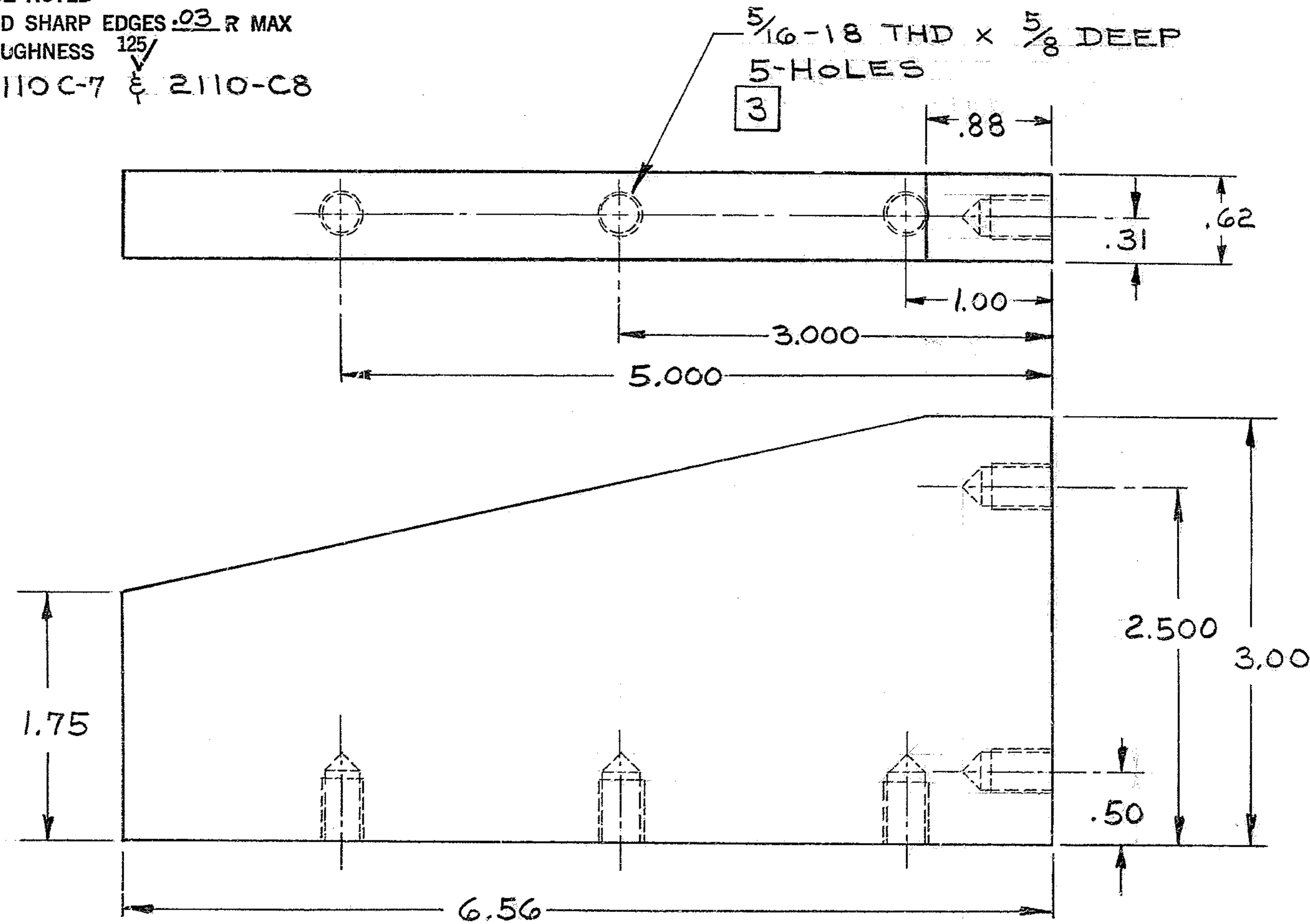
**NOTES: UNLESS OTHERWISE NOTED**

1. REMOVE ALL BURRS AND SHARP EDGES  $.03 R$  MAX

2. MACHINED SURFACE ROUGHNESS  $125/\sqrt{\text{ }}$

3. MATCH WITH 2110C-7 & 2110-C8

REVISIONS				
LTR	DESCRIPTION	ECR	DATE	BY/APVD



MATL: ALUM.  
FINISH: BLACK ANODIZE

150 INCH STELLAR TELESCOPE

<p>TOLERANCES UNLESS OTHERWISE NOTED</p> <p>DECIMALS    FRACTIONS    ANGULAR</p> <p>.XX <math>\pm</math> .03                    <math>\pm</math> —                    <math>\pm 0^\circ 30'</math></p> <p>.XXX <math>\pm</math> .010</p>			<p><b>KITT PEAK NATIONAL OBSERVATORY</b></p> <p>OPERATED BY THE ASSOCIATION OF UNIVERSITIES FOR RESEARCH IN ASTRONOMY, INC. UNDER CONTRACT WITH NATIONAL SCIENCE FOUNDATION</p>			
<p>NEXT ASSEMBLY 2110-D9</p>		<p>NAME SIDE PLATE - SECONDARY FLIP ALIGNMENT MIRROR ASSEMBLY</p>		<p>REF FILE 1214</p>		
<p>SCALE: FULL</p>	<p>DESIGNED BY A.A.A.</p>	<p>DATE 12-11-72</p>	<p>APPROVED BY A.A.A.</p>	<p>DATE 5-1-73</p>	<p>DWG NO. 2110-B6</p>	<p>REV</p>
<p>PRINT ISSUED</p>	<p>DRAWN BY D.L.B.</p>	<p>DATE 12-15-72</p>	<p>APPROVED BY</p>	<p>DATE</p>	<p>RELEASE DATE 5-3-73</p>	<p> </p>
<p>CHECKED BY</p>	<p>DATE</p>	<p>APPROVED BY</p>	<p>DATE</p>	<p> </p>	<p> </p>	<p> </p>

RAC 5-2-73