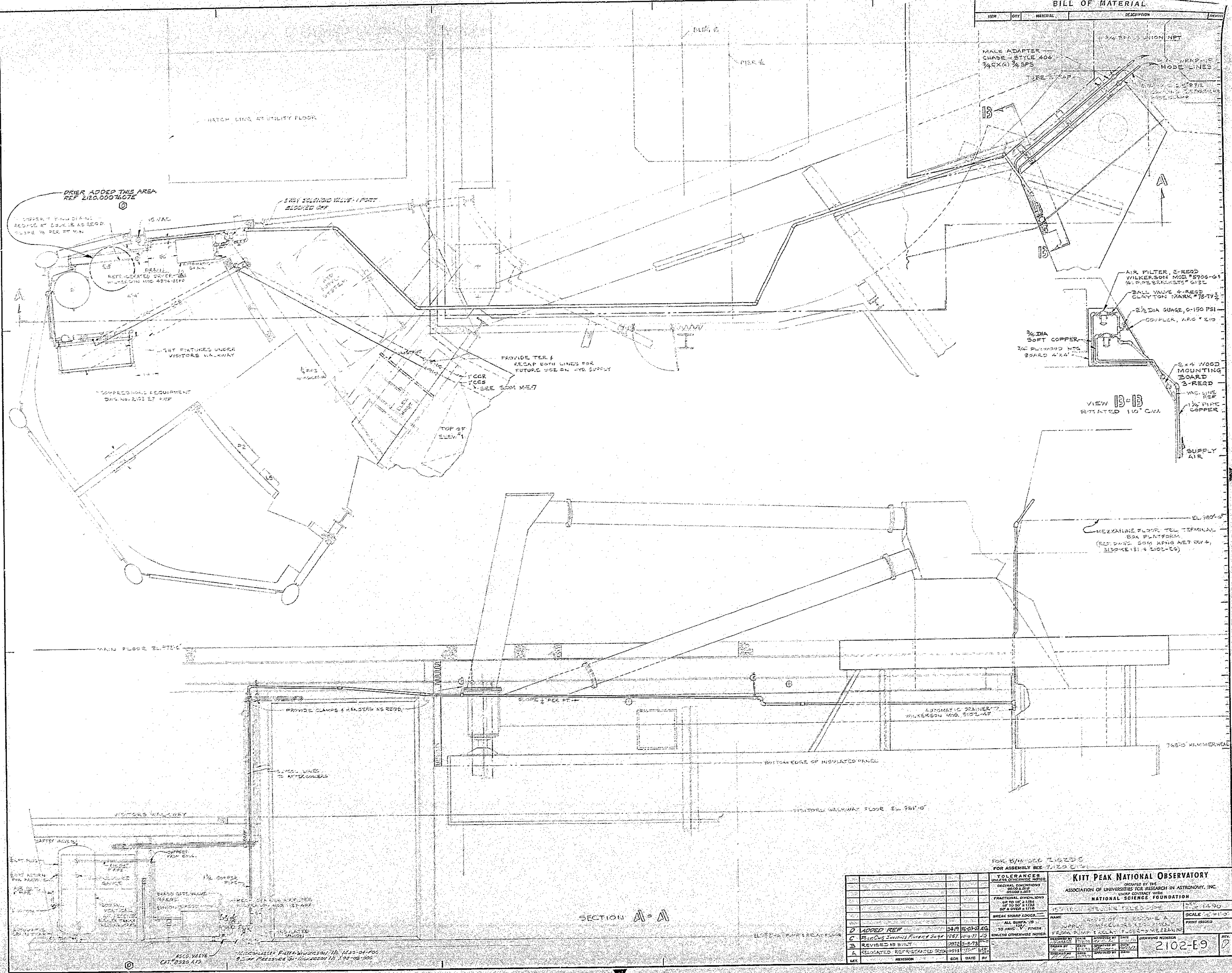


**BILL OF MATERIAL**

ITEM	QTY	MATERIAL	DESCRIPTION	LOCATION
			1/4" BRASS UNION NET	
			WRAP-UP HOSE LINES	
			MALE ADAPTER CHASE - STYLE 404 3/4" CX (X) 3/4" SPS	
			TUBE STRAP	
			AIR FILTER, 2-REED WILKERSON MOD #5706-01 5/8" SPS 2 1/2" DIA	
			BALL VALVE, 1-REED CLAYTON MARK #18-TV 3/4"	
			2 1/2" DIA GAUGE, 0-150 PSI	
			COUPLER, 1/2" x 1/2"	
			3/4" DIA SOFT COPPER	
			3/4" SCHEDULE 40 STEEL BOARD 4" x 4"	
			2" x 4" WOOD MOUNTING BOARD 3-REED	
			VAC. LINE REF 1/2" PIPE COPPER	
			SUPPLY AIR	



TOLERANCES UNLESS OTHERWISE NOTED			
DECIMAL DIMENSIONS	0.0005 & 0.010	0.0005 & 0.010	0.0005 & 0.010
FRACTIONAL DIMENSIONS	UP TO 1/16"	UP TO 1/32"	UP TO 1/16"
	1/16" & OVER	1/32" & OVER	1/16" & OVER
BREAK SHARP EDGES			
ALL SURF. TO TO HAVE 1/4" FINISH UNLESS OTHERWISE NOTED			
FOR W/M SEE FIGS 2 FOR ASSEMBLY SEE 7120 E-1			
<b>KITT PEAK NATIONAL OBSERVATORY</b>			
OPERATED BY THE ASSOCIATION OF UNIVERSITIES FOR RESEARCH IN ASTRONOMY, INC.			
UNDER CONTRACT WITH NATIONAL SCIENCE FOUNDATION			
15" ARCHITECTURAL TELESCOPE			SCALE 1/2" = 1'-0"
NAME			PRINT ISSUED
DRAWN BY			DATE
CHECKED BY			DATE
APPROVED BY			DATE
DRAWING NUMBER			REV.
2102-E9			1