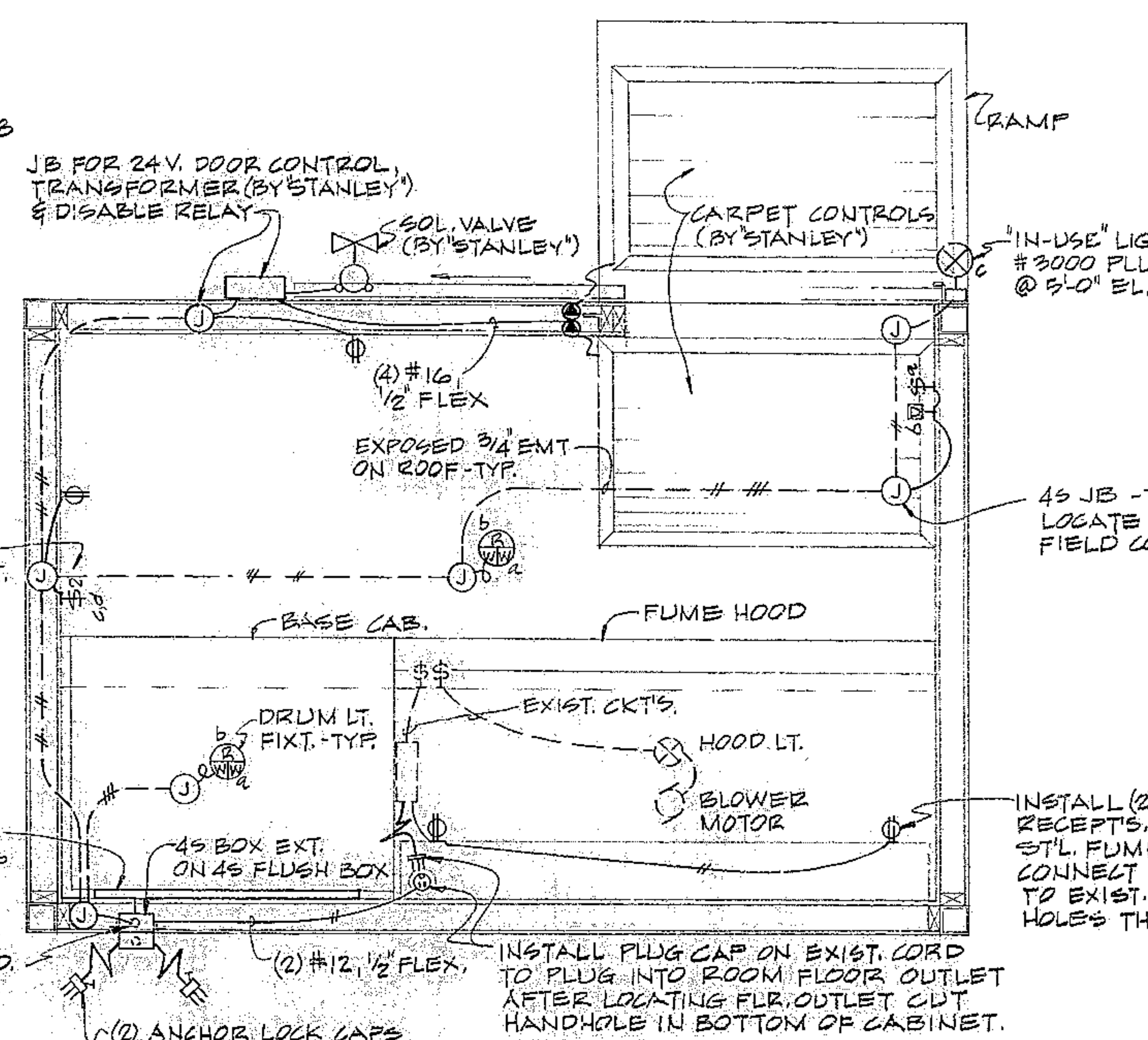
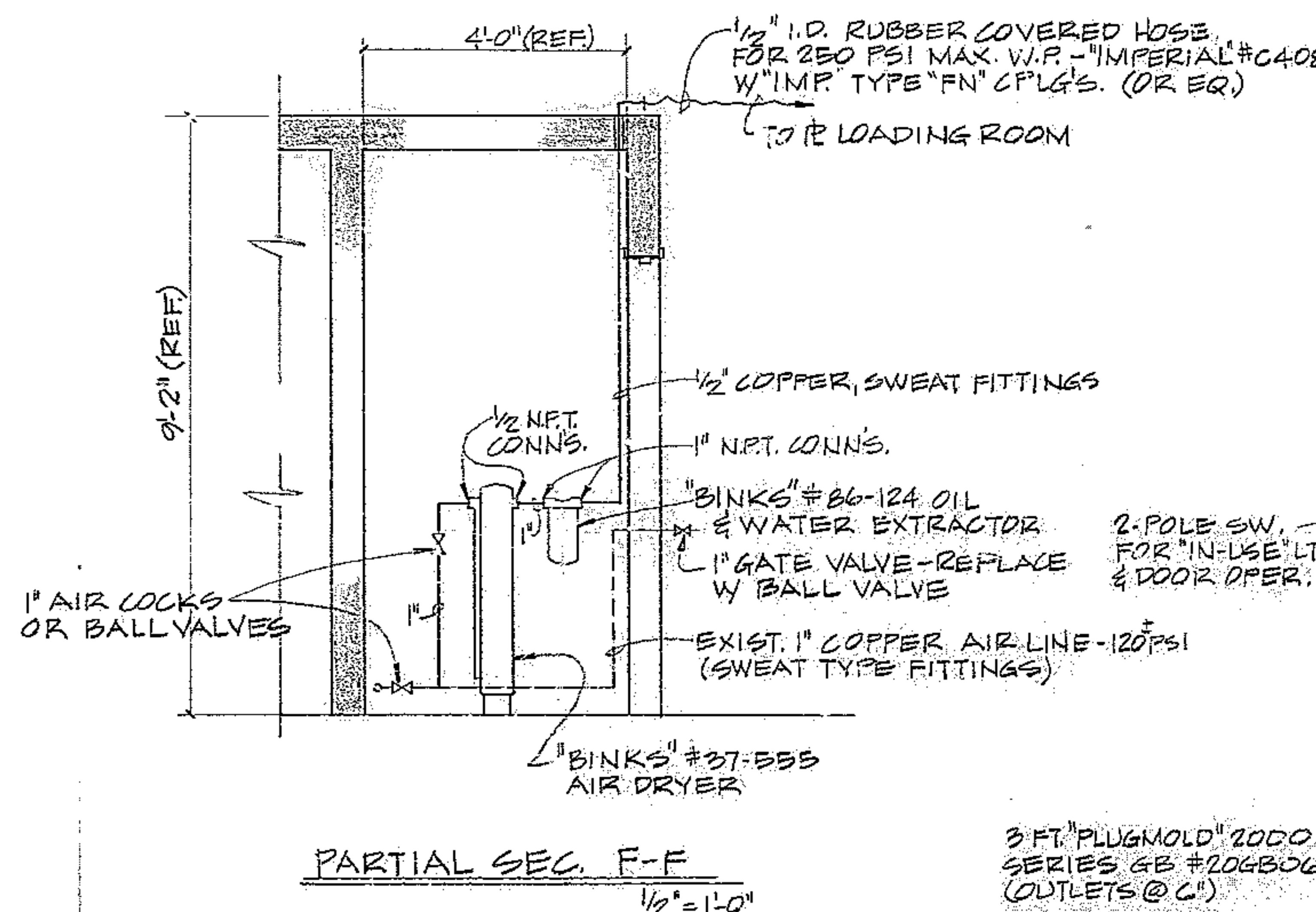
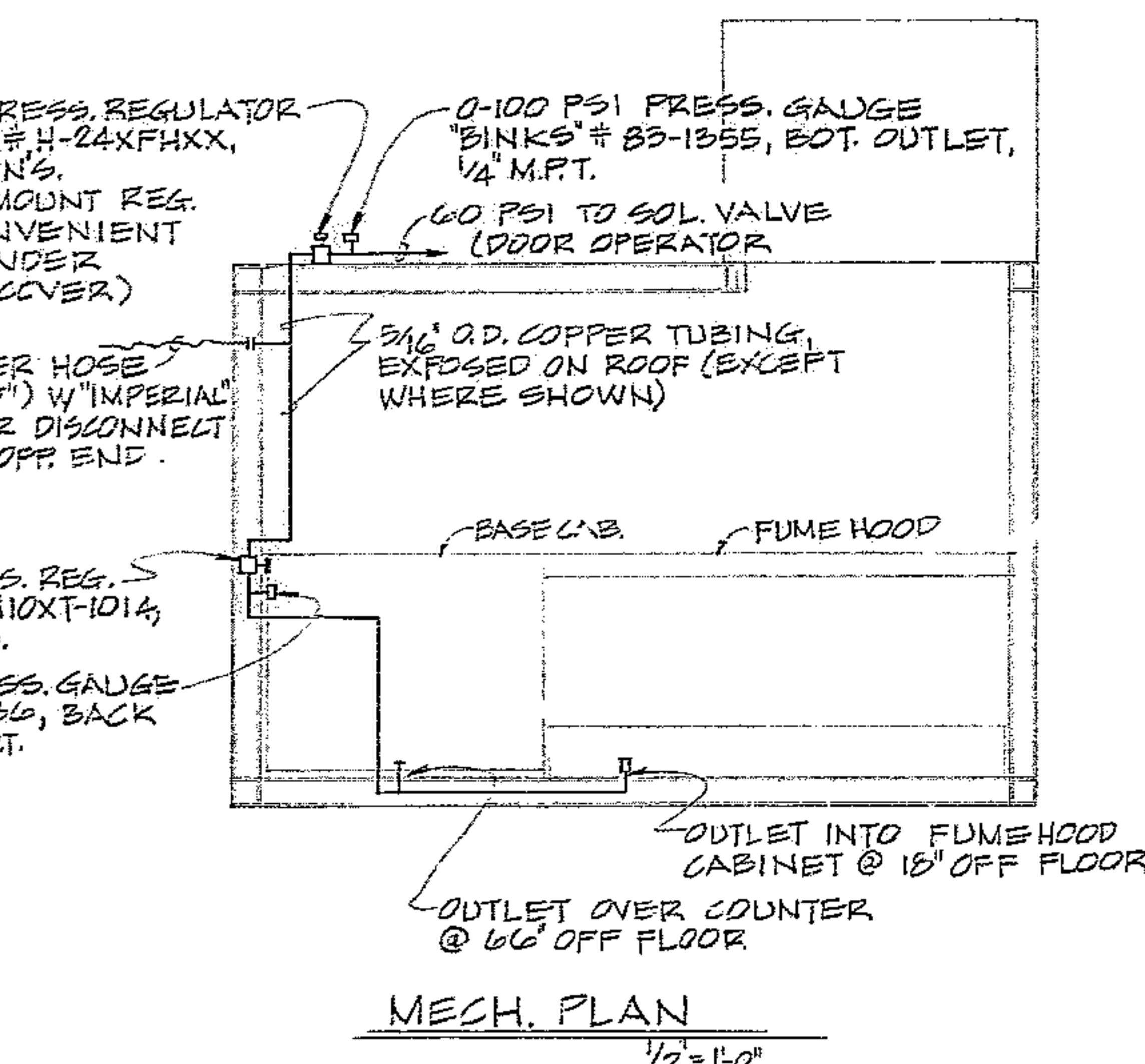


BILL OF MATERIAL

ITEM	QTY.	MATERIAL	DESCRIPTION
------	------	----------	-------------



LEVELS ON SH 1 FOR OTHER INFO.
LOADING AIR OUTLETS
ON ALL AIR LINES.

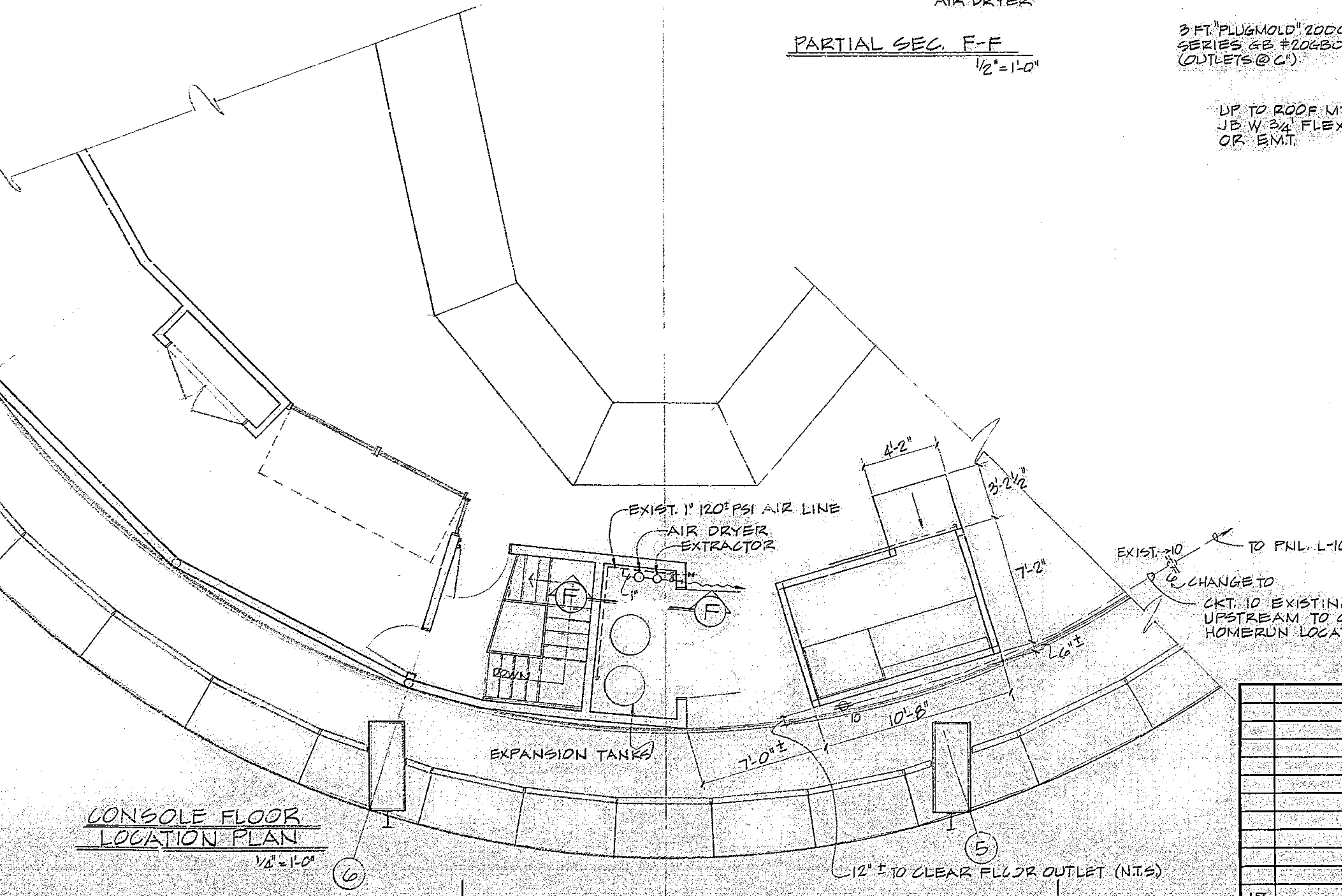
3 FT. "PLUGMOLD" 2000
SERIES GB #206B06
(OUTLETS @ C)

UP TO ROOF MTD.
JB W. 3/4" FLEX
OR EMT.

(2) ANCHOR LOCK CAPS
TO PLUG INTO FLOOR
OUTLET DUPLEX RECEPT -
ONE FOR OUTLETS & LIGHTS,
ONE FOR FUME HOOD & DOOR
OPERATOR. LENGTHS OF CORD
TO BE DETERMINED.

- ELECT. MATERIAL
- (1) BELL NOZZLE TO PROTECT
"STEEL CITY" #700
 - (2) ANCHOR LOCK CAPS - "SIERRA"
 - (1) FLOOR BOX - "STEEL CITY"
 - (2) SPECIAL OUTLETS - "HUBBELL"
CAPS - #7465
 - (1) RELAY FOR DISABLE -
#700N 200A24 (MOUNT IN
FOR DOOR CONTROL)
 - (1) "IN-USE" LIGHT - "SIERRA"
SIM. TO CAT. NO. 2209 WITH
MESSAGE "IN USE", BLACK
RED BACKGROUND, WHITE
VERTICAL LETTERS.
 - (2) LIGHT FIXTURES - "PRELUX"
W (2) 60W & (1) 25W RED. WIR.
SEPARATE SWITCHING
DIMMER SW. - GE. # DI-61
60W, ON-OFF ROTARY
2-POLE SWITCH - HUBBELL

NOTES:
1. PULL IN & CONNECT GROUND WIRE TO ALL
OUTLETS & FIXTURES.
2. SEE INTERIOR WALL ELEVATIONS ON SH. 1
FOR LOCATION OF ELEC. & MECH. ITEMS.



EXIST. 10" TO PNL. L-10
CHANGE TO
CKT. 10 EXISTING - CHANGE (2) FLR. OUTLETS
UPSTREAM TO CKT. 6 AT NEAREST COMBINED
HOMERUN LOCATION TO PROVIDE CLEAR CKT. FOR RM.

- 5-BREAK SHARP EDGES
- 4-IDENTIFY BY _____ AT LOCATION 4
- 3-STAMP MATCH MARKS ON ALL MATING PARTS WHERE NECESSARY
- 2-PROJECT DRAWINGS
- 1-FOR NEXT ASSY. SEE _____

LET.	REVISION	ECR.	DATE	BY

TOLERANCES UNLESS OTHERWISE NOTED			
DECIMAL DIMENSIONS	00.00 ± .010	00.000 ± .003	
FRACTIONAL DIMENSIONS	UP TO 18" ± 1/64	18" TO 36" ± 1/32	36" & OVER ± 1/16
ANGLES	± 0° 30'		
ALL SURFACES	125	TO HAVE FINISH	UNLESS OTHERWISE NOTED.

KITT PEAK NATIONAL OBSERVATORY
OPERATED BY THE
ASSOCIATION OF UNIVERSITIES FOR RESEARCH IN ASTRONOMY
UNDER CONTRACT WITH
NATIONAL SCIENCE FOUNDATION

150' TELESCOPE BLDG.

NAME: **PLATE LOADING ROOM LOCATION PLAN, ELECT. & MECH.**

DESIGNED BY MRS. J. M. R. 1-72	DATE 1-72	APPROVED BY JRS	DATE 7/2/72	DRAWING NUMBER 210
DRAWN BY MRS. J. M. R.	DATE 1-72	APPROVED BY	DATE	
CHECKED BY RJD/121	DATE	APPROVED BY	DATE	