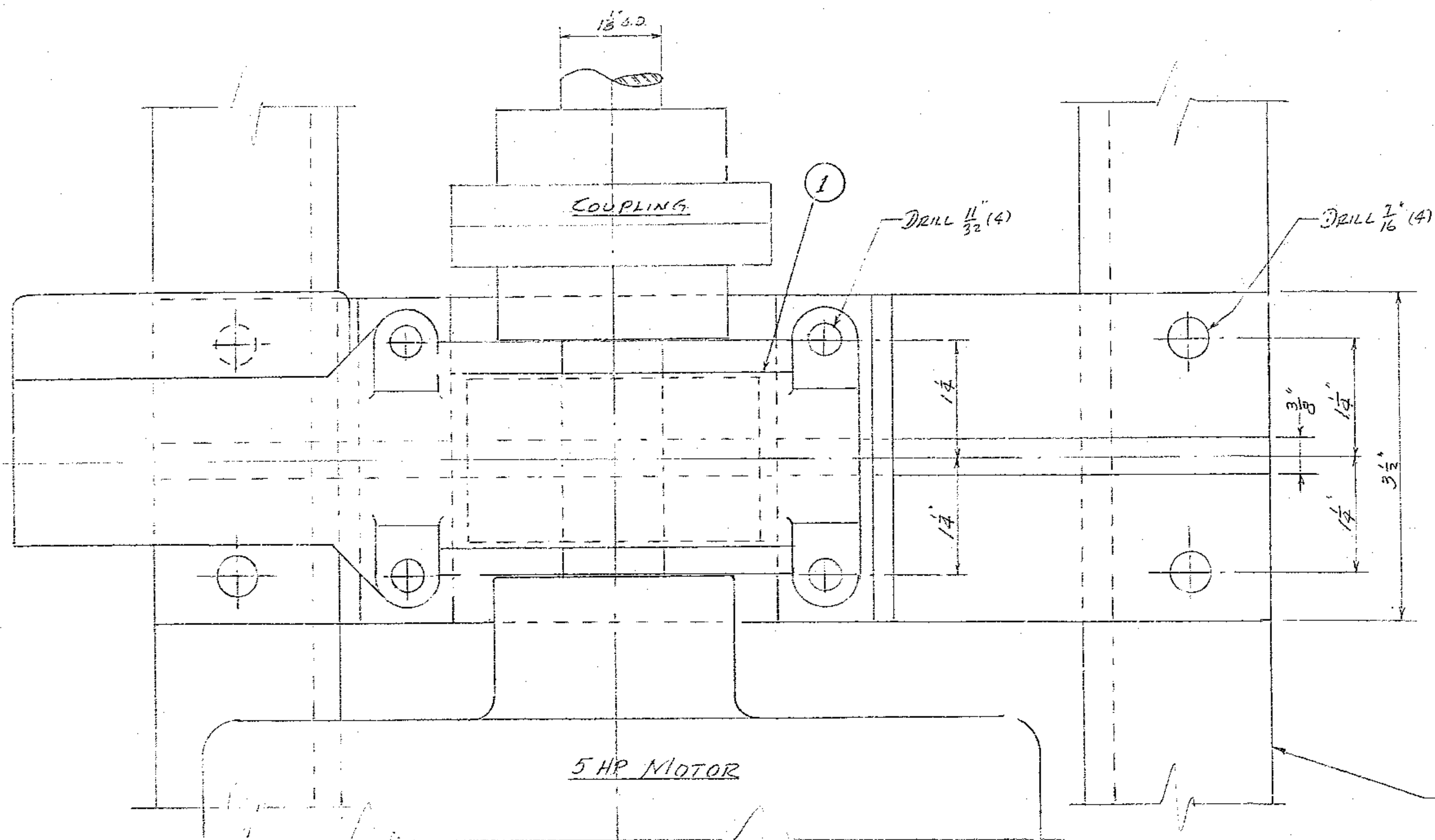


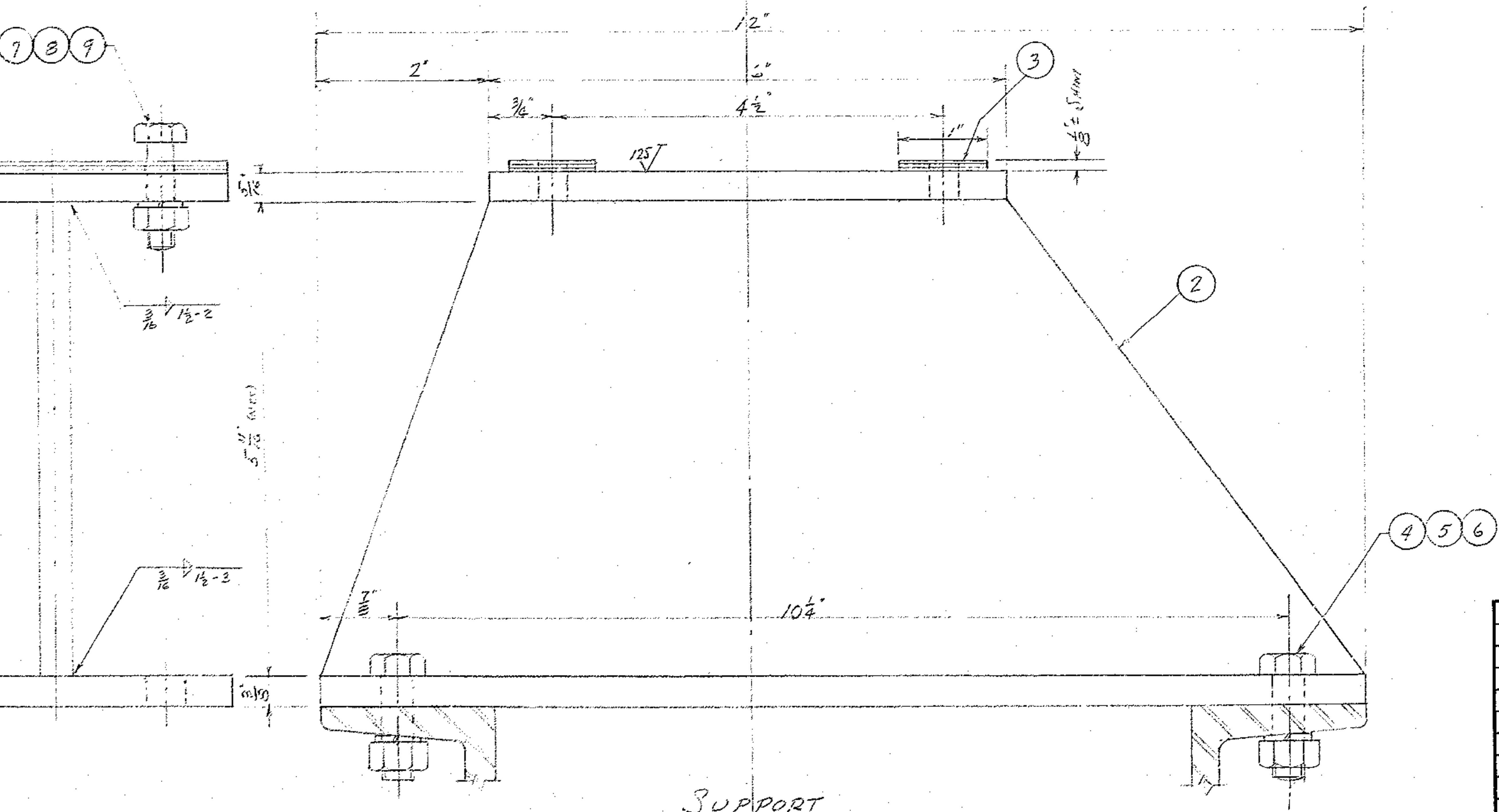
**BILL OF MATERIAL**

ITEM	QTY.	MATERIAL	DESCRIPTION
1	1	COMM'L.	AC SPRING-SET SHOE BRAKE- EE-1C9516-660A101AA-015 - 4 WITH GE 3360B20-YP3 WHEEL-
2	1	3/8" R	BASE - WELDMENT
3	2	STEEL	1" x 4" SHIMS - 1/2" EA.
4	4	"	3/8"-16 HEX. HD. CAP SCR - 1 1/2" LG.
5	4	"	" " " NUTS
6	4	"	3/8" LOCK WASHERS
7	4	"	5/16"-18 HEX. HD. CAP SCR - 1 1/2" L
8	4	"	" " " P NUTS
9	4	"	5/16" LOCK WASHERS



6410.5  
BASE FRAME  
SEE W.D. DWG.  
#1157-601-1A  
(AURA #2151-250-0002)

PLAN



SUPPORT

- 6-FINISH PAINT TO MATCH EXI
- 5-SHOP COAT - RED LEAD
- 4-IDENTIFY BY \_\_\_\_\_ AT LOCATION 4
- 3-STAMP MATCH MARKS ON ALL MATING PARTS WHERE NE
- 2-PROJECT DRAWINGS \_\_\_\_\_
- 1-FOR NEXT ASSY. SEE WEST GEAR No 1157-60

NOTES-

**KITT PEAK NATIONAL OBS**  
OPERATED BY THE  
ASSOCIATION OF UNIVERSITIES FOR RESEARCH IN  
UNDER CONTRACT WITH  
**NATIONAL SCIENCE FOUNDA**

150 INCH TELESCOPE DOME - KPA108C  
NAME LOWER SHUTTER DRIVE  
SUPPLEMENTARY BRAKE

TOLERANCES UNLESS OTHERWISE NOTED	
DECIMAL DIMENSIONS	00.00 ± 0.010 00.000 ± 0.003
FRACTIONAL DIMENSIONS	UP TO 18" ± 1/64 18" TO 50" ± 1/32 50" & OVER ± 1/16
BREAK SHARP EDGES	
ALL SURFACES TO HAVE 125° FINISH UNLESS OTHERWISE NOTED.	
DESIGNED BY	DATE
APPROVED BY	DATE
DRAWN BY	DATE
APPROVED BY	DATE
CHECKED BY	DATE
APPROVED BY	DATE
LET.	REVISION
ECR	DATE
BY	

DESIGNED BY	DATE	APPROVED BY	DATE	DRAWING NUMBER
WWTB	7-9-70	A. N. G. Jell	7-22-70	210
DRAWN BY	DATE	APPROVED BY	DATE	
WWTB	7-9-70			
CHECKED BY	DATE	APPROVED BY	DATE	
M. H. G.	8-11-70			