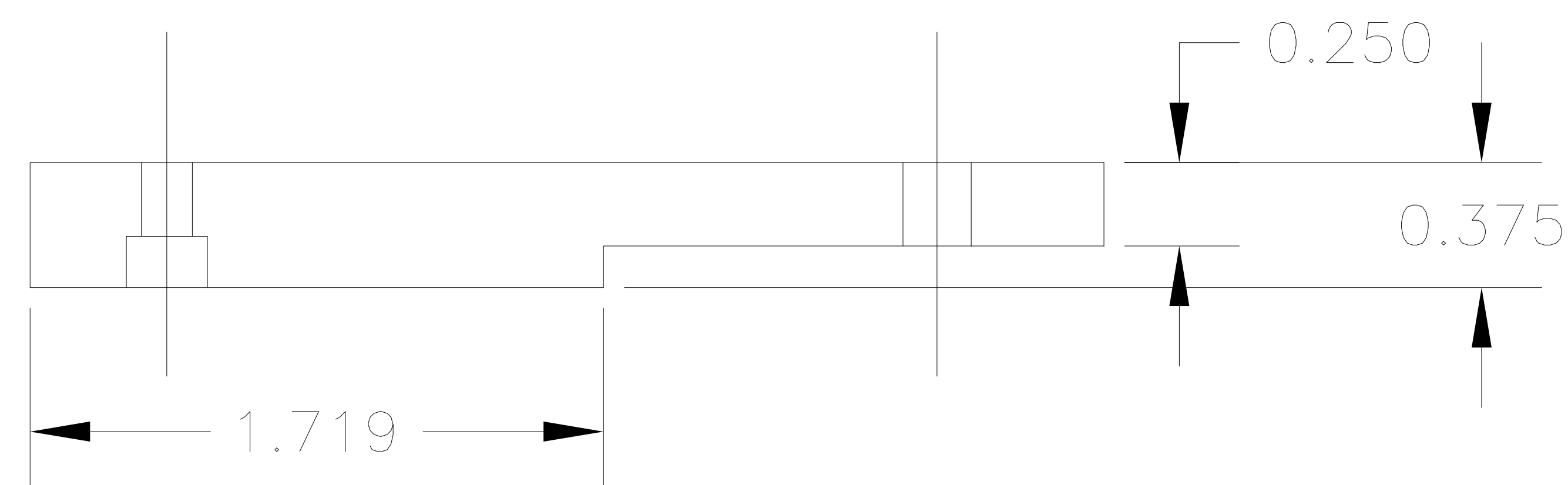
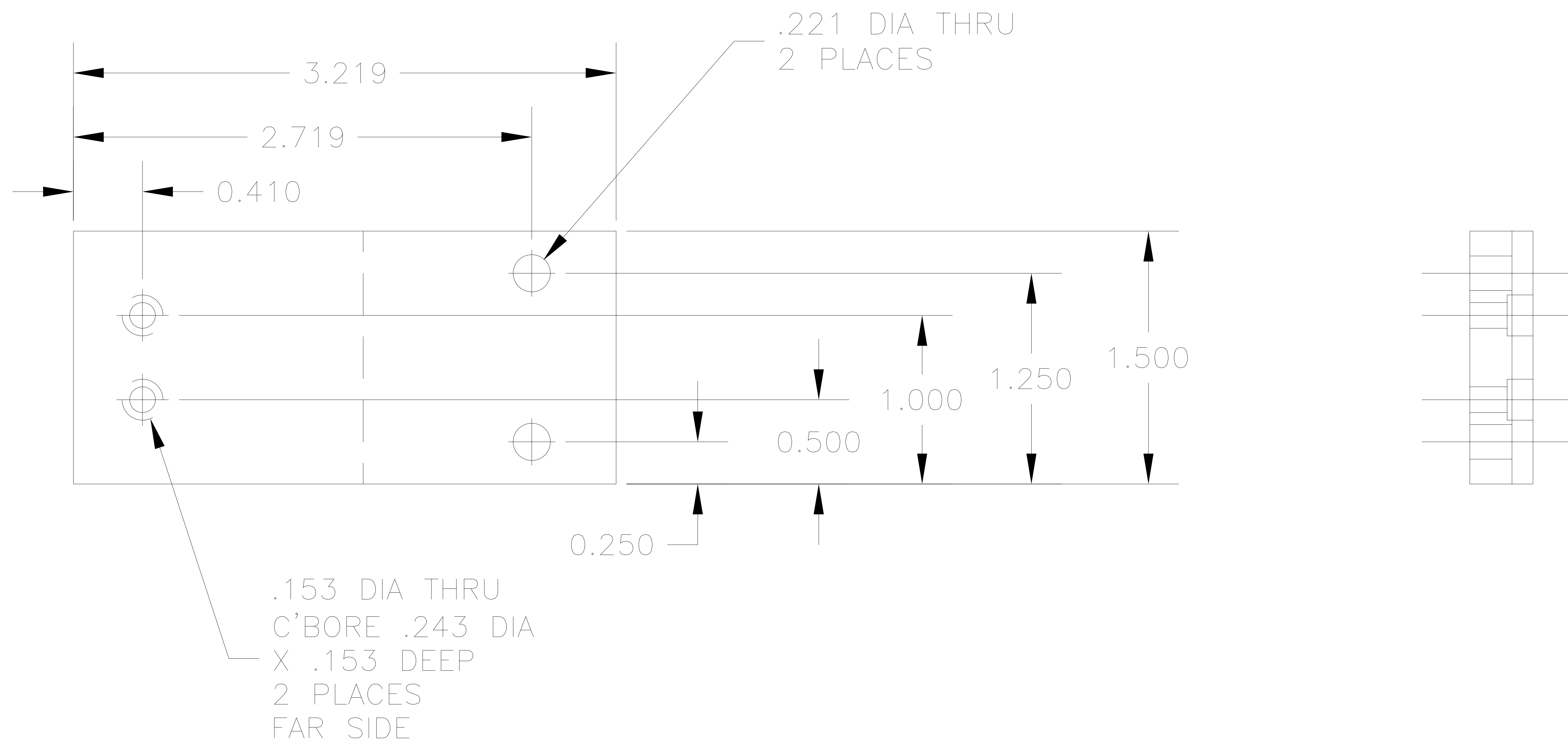


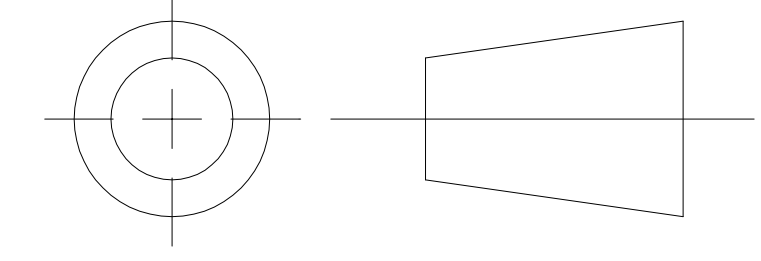
NOTES: UNLESS OTHERWISE SPECIFIED

1. REMOVE ALL BURRS AND SHARP EDGES .030 R MAX.
2. MACHINED SURFACE ROUGHNESS $125\sqrt{\text{ }}$
3. MATERIAL - ALUMINUM 6061-T6
4. FINISH - BLACK SULPHURIC ANODIZE

REVISIONS

LTR	DESCRIPTION	ECR	DATE	BY	APRV
-----	-------------	-----	------	----	------



TOLERANCES UNLESS OTHERWISE NOTED .XX ±.03 ANGULAR .XXX ±.010 ±.5°		 THIRD ANGLE PROJECTION		NATIONAL OPTICAL ASTRONOMY OBSERVATORIES OPERATED BY THE ASSOCIATION OF UNIVERSITIES FOR RESEARCH IN ASTRONOMY UNDER COOPERATIVE AGREEMENT WITH NATIONAL SCIENCE FOUNDATION			
DO NOT SCALE DRAWING		NAME		USED ON			
NEXT ASSEMBLY		CAMERA MOUNTING PLATE		2.1m TELESCOPE			
2094.0007258E				DWG SIZE	REF FILE		
SCALE: FULL		DESIGNED BY	DATE	CHECKED BY	DATE	DWG NO	REV.
DWG PRODUCED USING		DRAWN BY	DATE	APPROVED BY	DATE	2094.0008213B	
AUTOCAD R14		PRINT ISSUED	DATE	APPROVED BY	DATE		