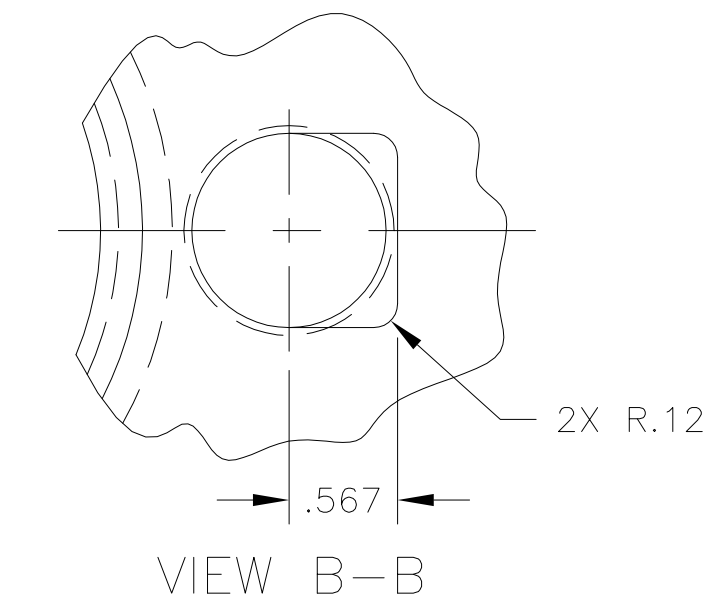
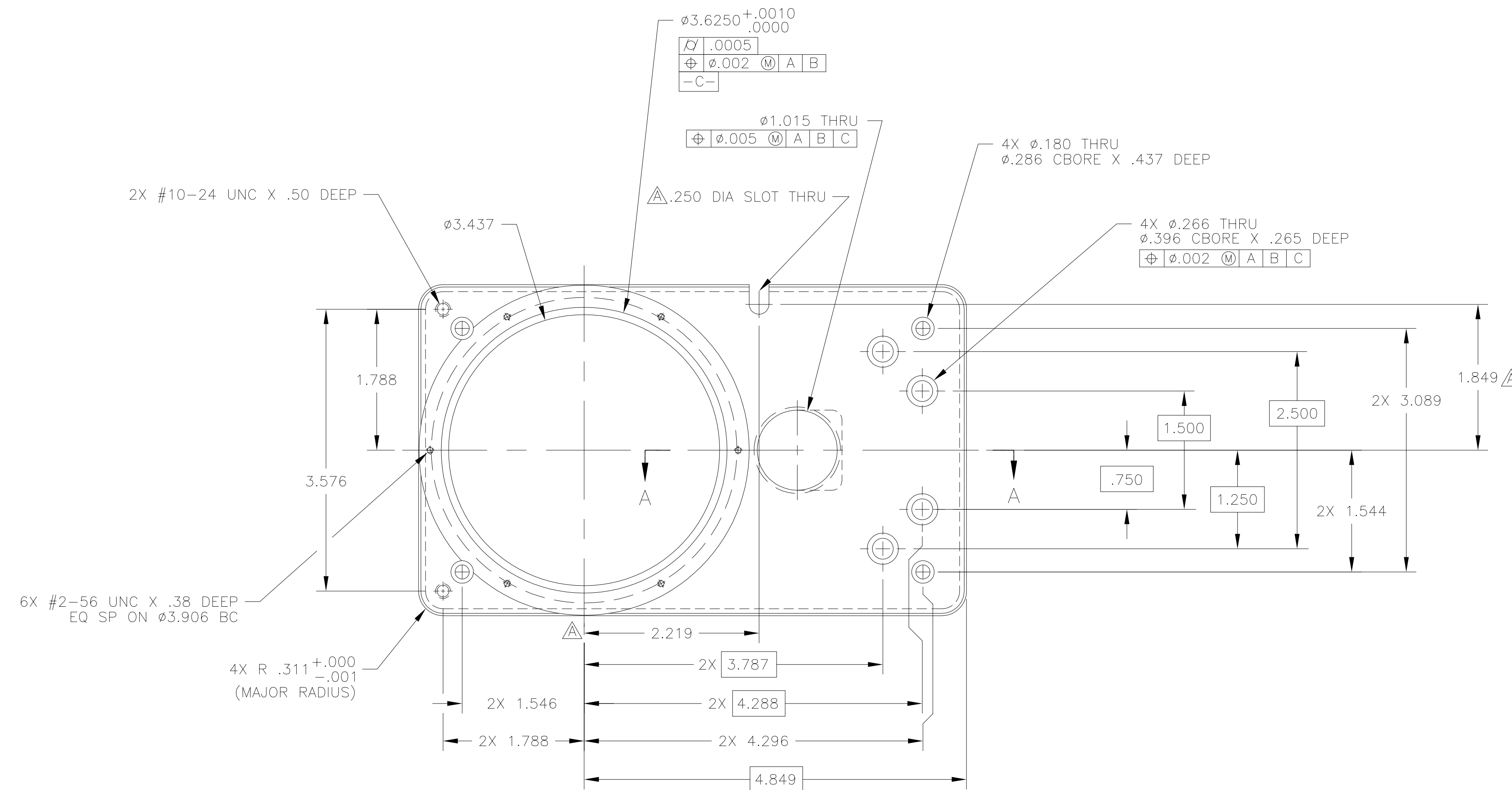
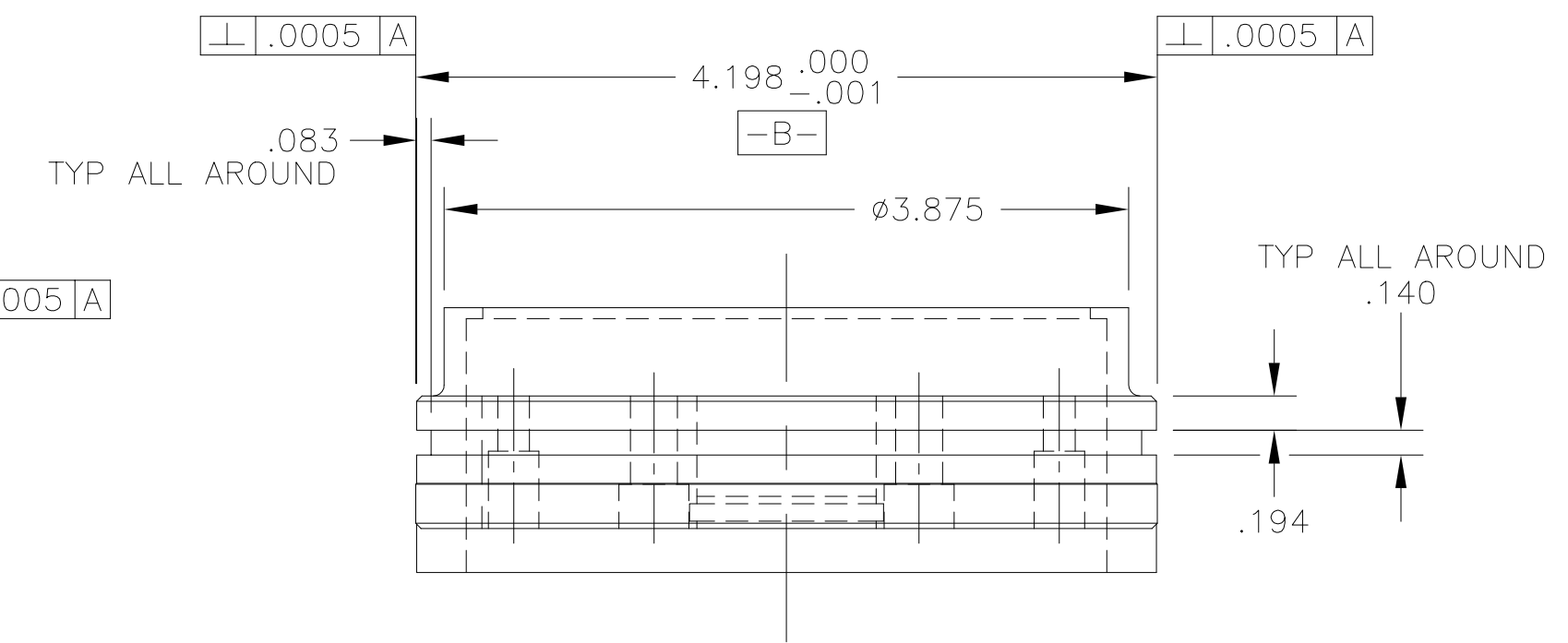
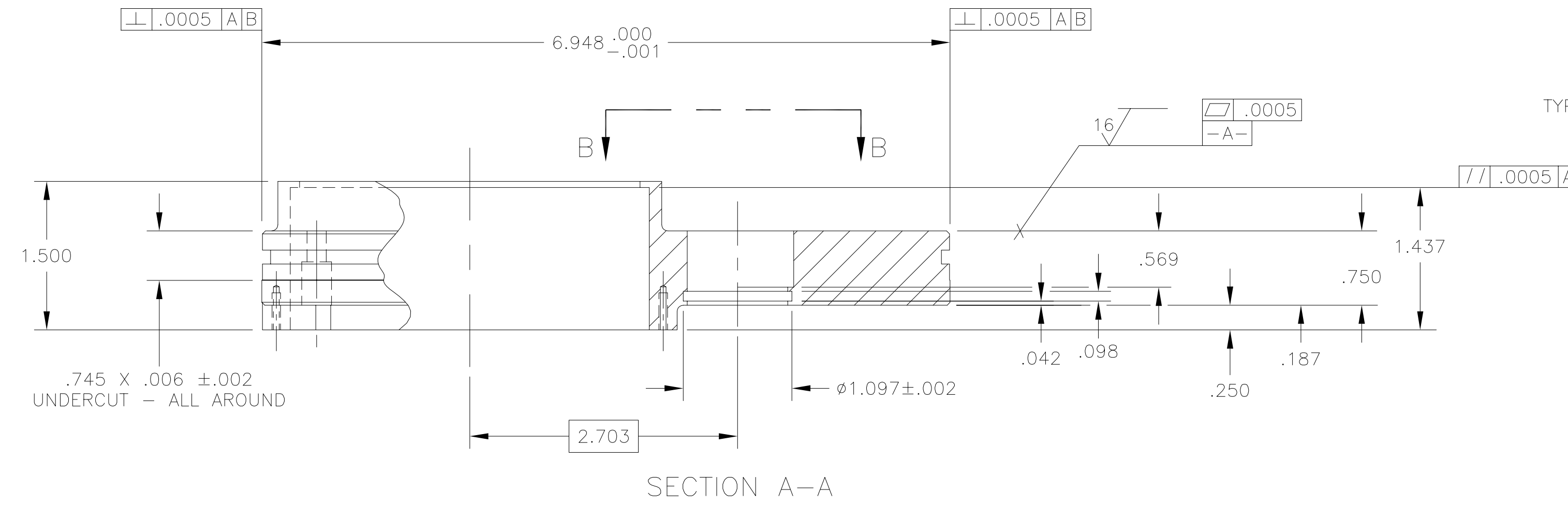


- NOTES: UNLESS OTHERWISE SPECIFIED
1. REMOVE ALL BURRS AND SHARP EDGES .03.
  2. MACHINED SURFACE ROUGHNESS 125 ✓
  3. MATERIAL: 2024-T351 AL ALY PLATE.  
ADD STOCK FOR MACHINING AS REQUIRED.
  4. FINISH: HARD BLACK ANODIZE.
  5. ALL DIMENSIONS APPLY AFTER ANODIZING.
  6. THIS DRAWING DIMENSIONED PER ANSI Y 14.5M-1982.

REVISIONS						
ZONE	LTR	REVISIONS	ECR	DATE	BY	APRV
B4	A	ADDED SLOT FOR SEEING CAMERA CABLE	ECR	14DEC98	WRE	APRV



QTY	REQD	PART OR IDENTIFYING NO	DESCRIPTION	MATERIAL/SPECIFICATION	ZONE	ITEM NO	
TOLERANCES UNLESS OTHERWISE NOTED							
DECIMALS		.XX ± .03		FRACTIONS ± 32			
ANGULAR		± 0'30"					
NATIONAL OPTICAL ASTRONOMY OBSERVATORIES OPERATED BY THE ASSOCIATION OF UNIVERSITIES FOR RESEARCH IN ASTRONOMY UNDER COOPERATIVE AGREEMENT WITH NATIONAL SCIENCE FOUNDATION							
NEXT ASSEMBLY 2094.0007258E			NAME FRONT PANEL		REF FILE 2102		
					USED ON 84" TELE		
SCALE:	FULL	DESIGNED BY	DATE	APPROVED BY	DATE	DWG NO	
DRAWING PRODUCED USING	AUTOCAD r12	DRAWN BY	AJC-UP	DATE	95-05-15	APPROVED BY	DATE
PRINT ISSUED		CHECKED BY		DATE		APPROVED BY	DATE
						2094.0007259D	REV A
						SHEET 1 OF 1	