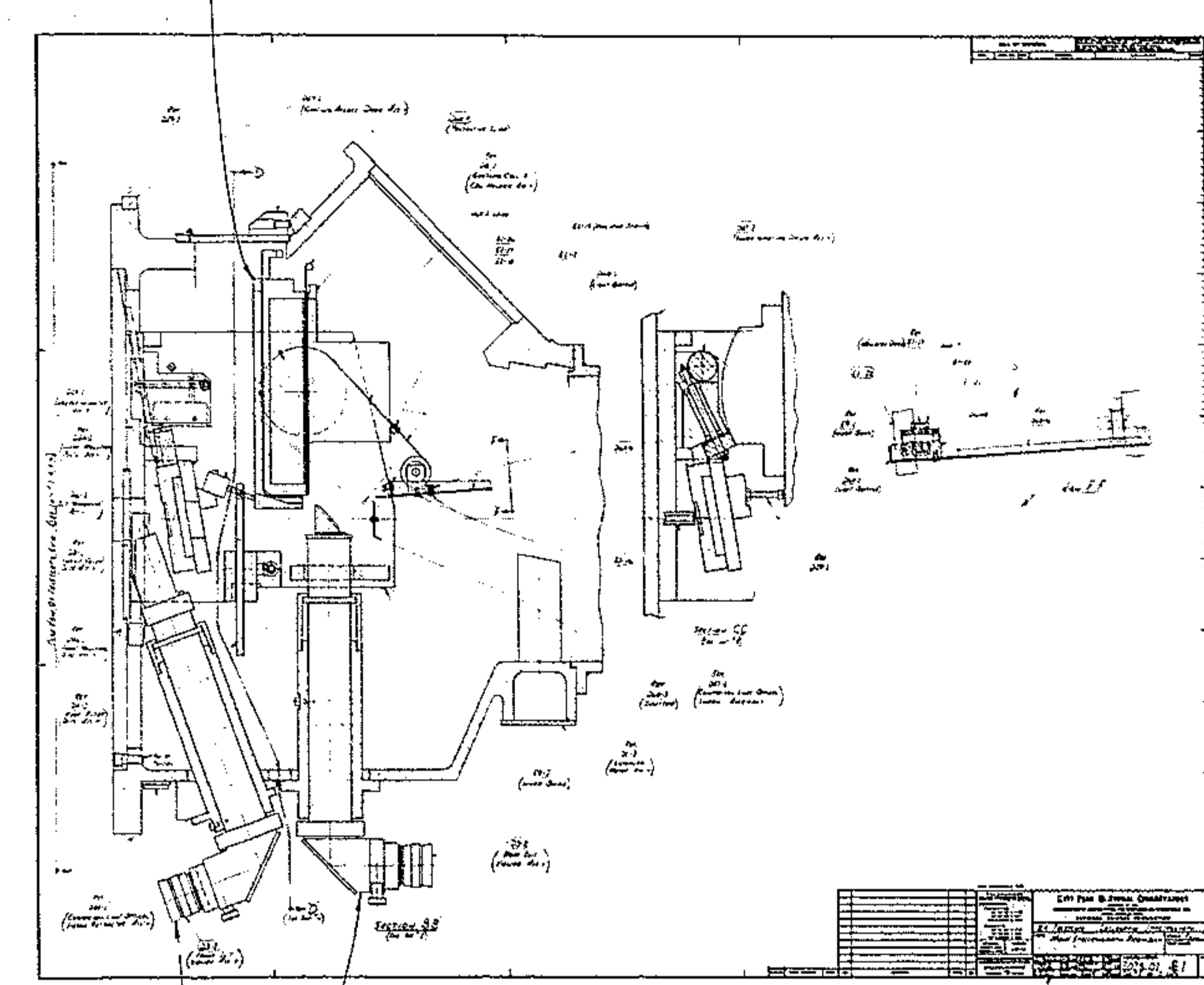
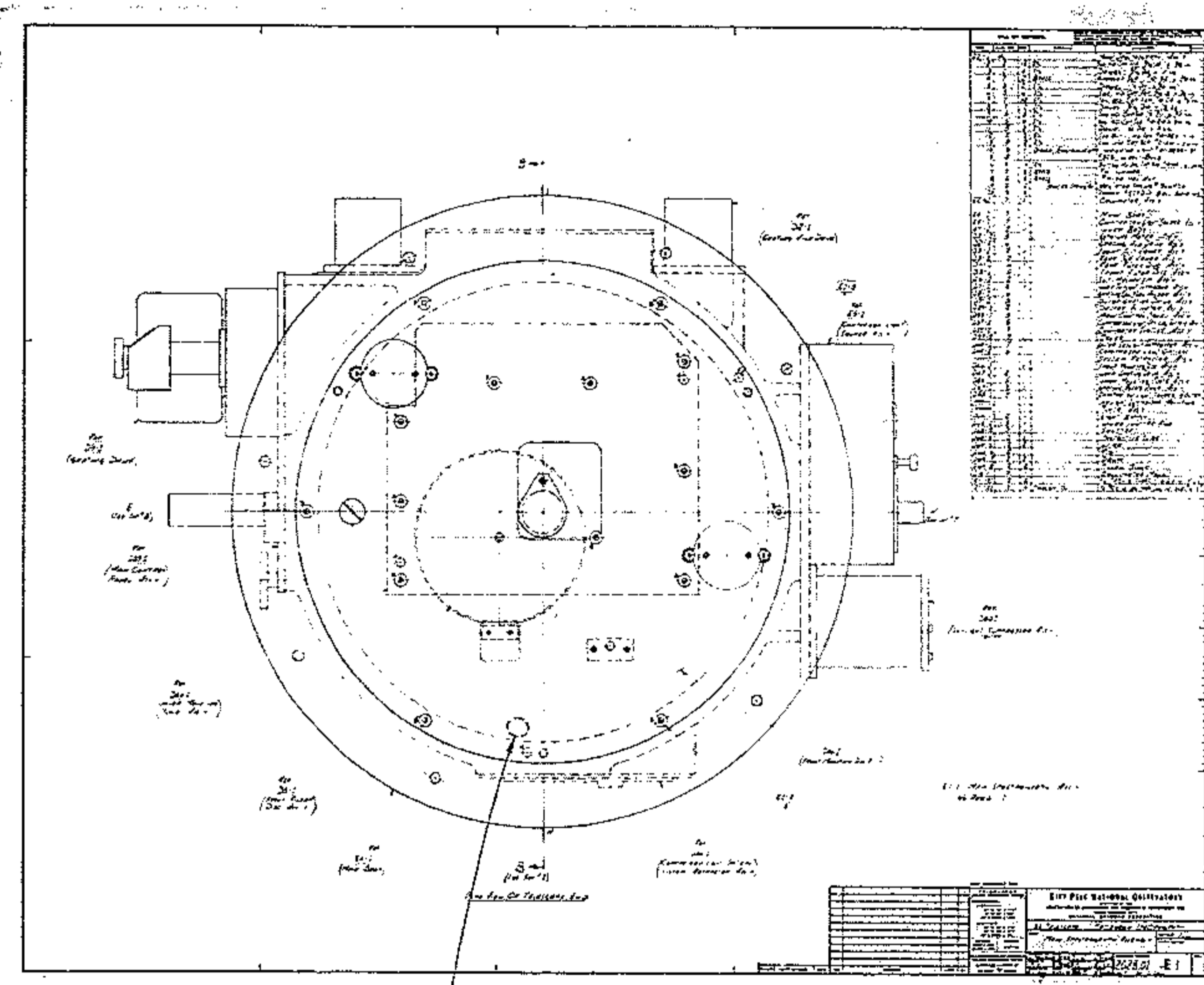
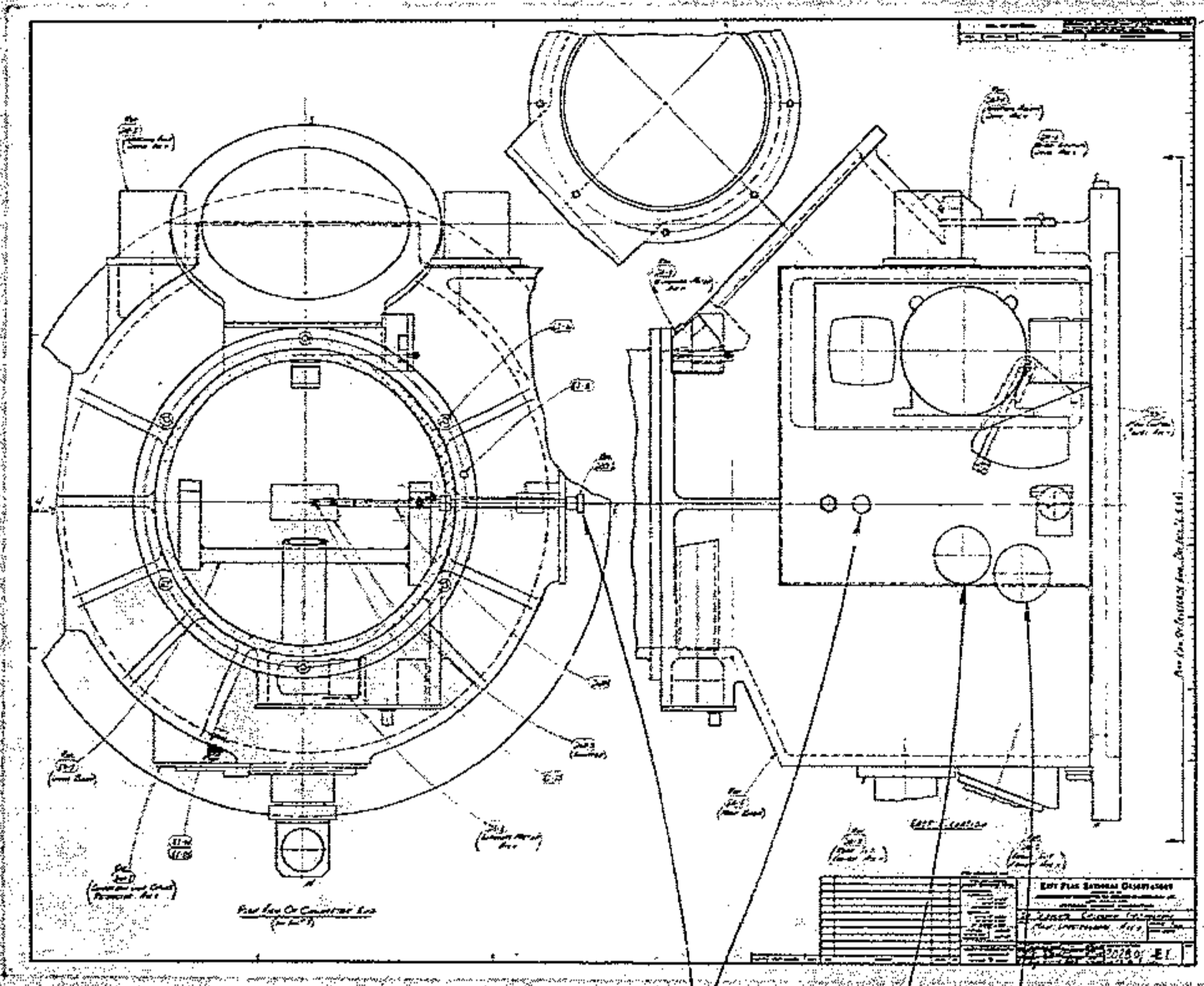
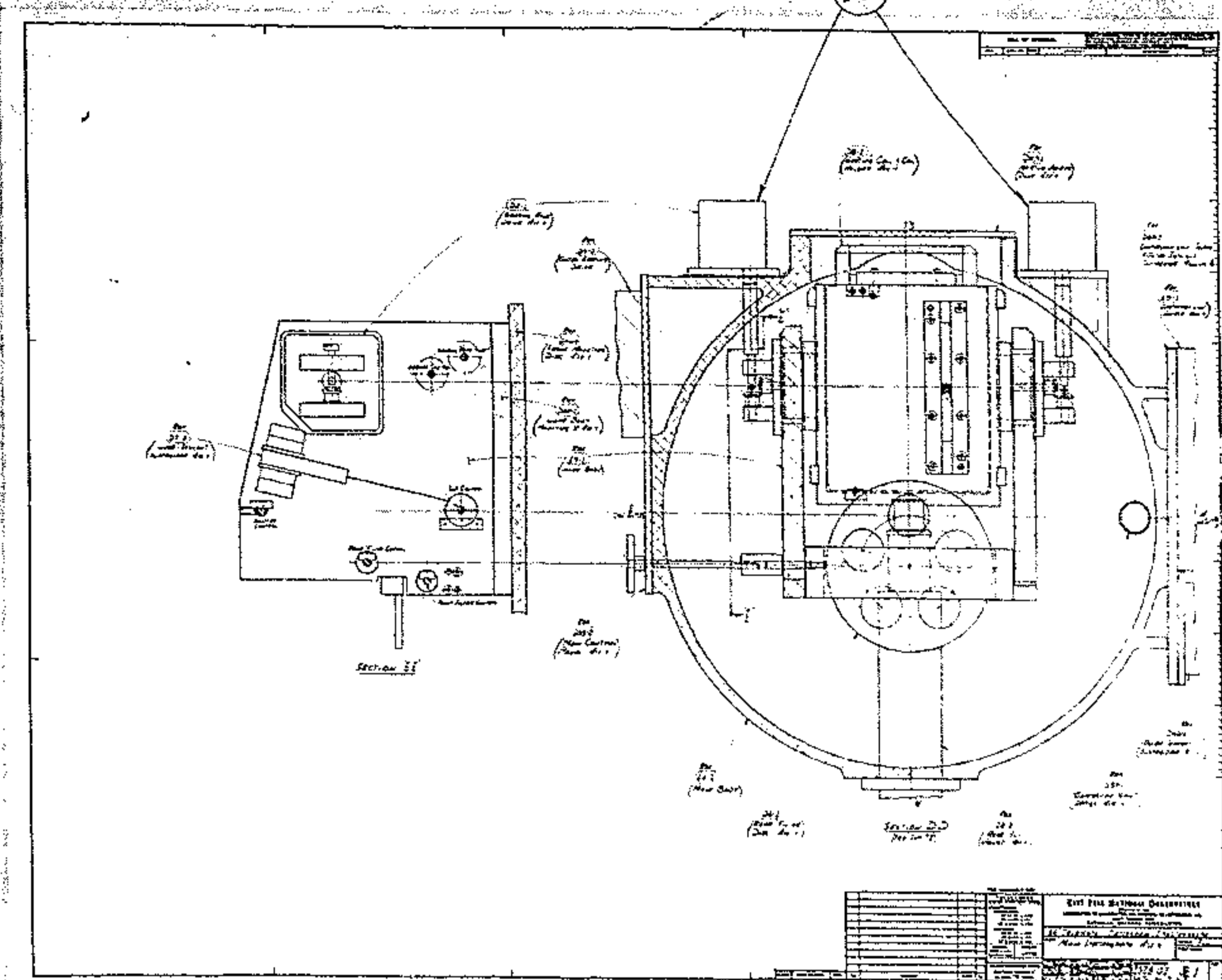
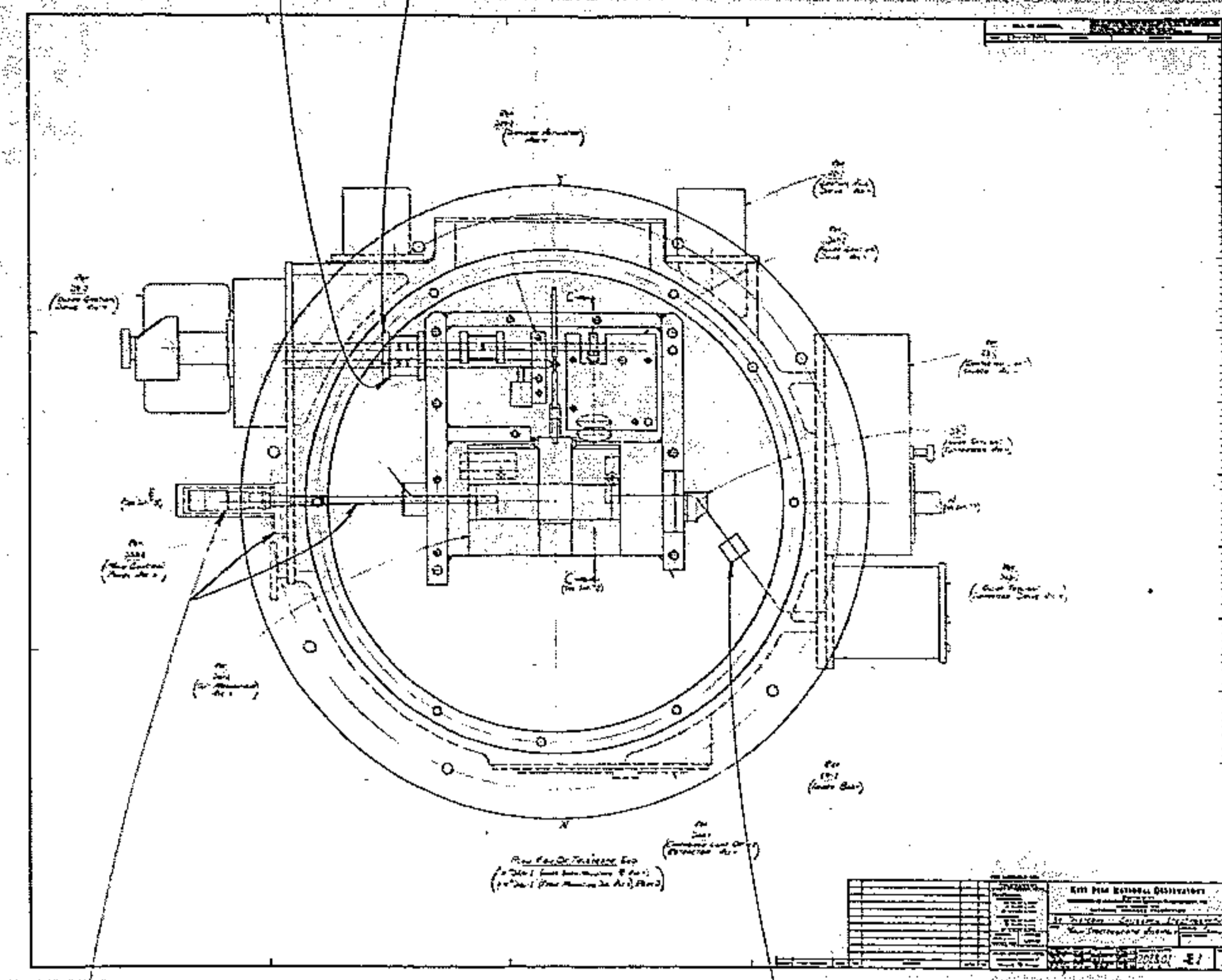
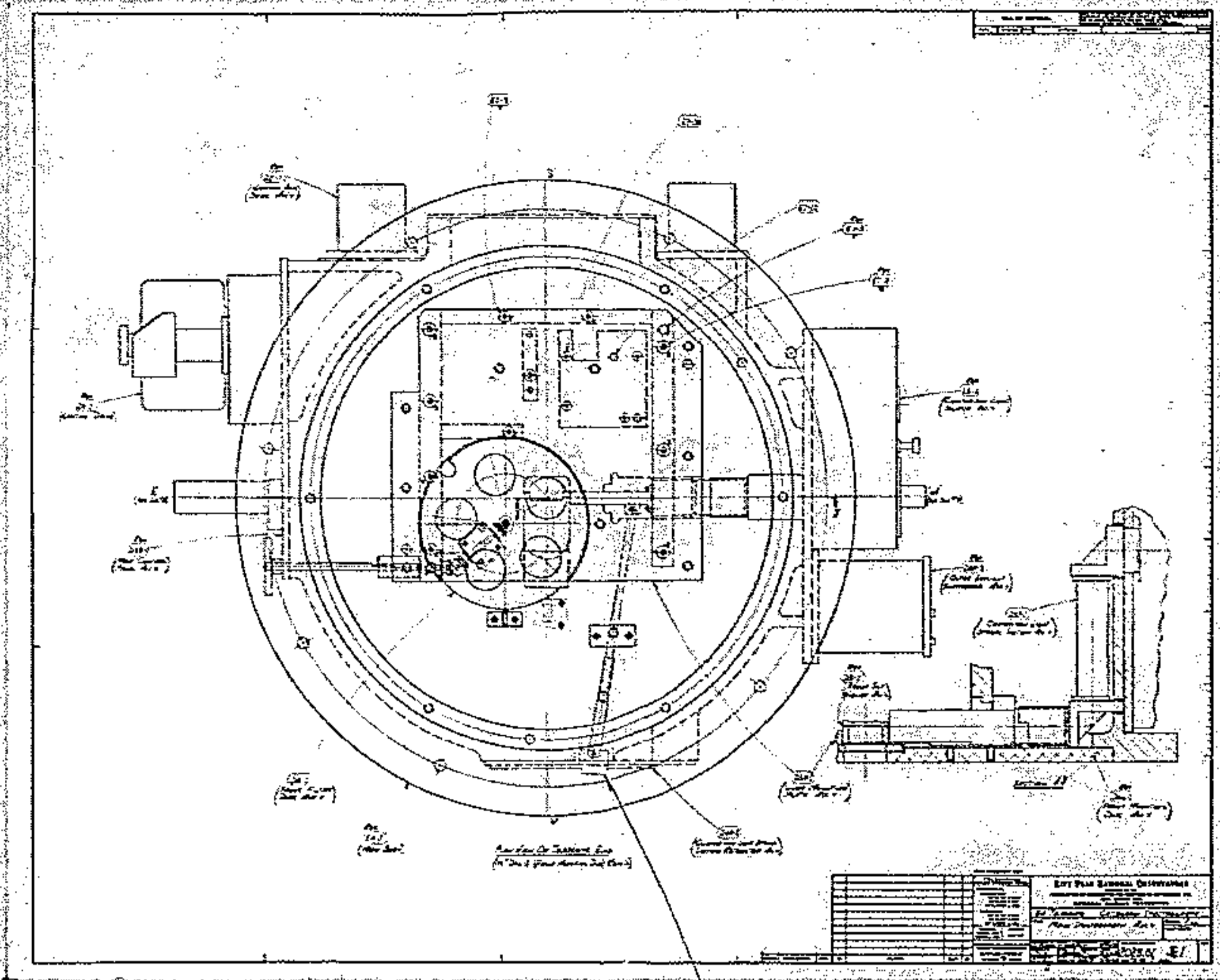


BILL OF MATERIAL			
ITEM	QTY	MATERIAL	DESCRIPTION



THINGS WHICH MUST BE DONE PRIOR TO SEPARATING FRONT MOUNTING DISC AND ATTACHED EQUIPMENT FROM MAIN BODY

DESCRIPTION OF UNIT NO. TO BE UNCOUPLED	DESCRIPTION OF WORK
1. FRONT SLIT VIEWER	REMOVE 4 SCREWS AND SLIDE UNIT OUT
2. REAR SLIT VIEWER	REMOVE 4 SCREWS AND SLIDE UNIT OUT
3. SLIT PUSH ROD	MOVE GRATING HOLDER TO # 34.76 POSITION (EXTREME FORWARD)
4. SKY LIGHT SUPPRESSOR	REACH THRU ACCESS HOLE IN SPECTROGRAPH MOUNTING FACE AND UNDO CABLE COUPLING TAKING CARE NOT TO ALLOW INNER CABLE TO SNAP INWARD.
5. SHUTTER SHAFT	PUSH SHAFT FULL IN, UNSCREW, AND PULL SHAFT OUT.
6. FRONT FILTER DISC CONTROL	FULL STRAIGHT OUT
7. REAR FILTER DISC CONTROL	FULL STRAIGHT OUT
8. COMPARISON LIGHT OPTICS	MOVE CONTROL TO "RETRACT" POSITION. REMOVE TWO FLAT HEAD SCREWS. MOVE CONTROL TO "FORWARD" POSITION. REMOVE TWO FLAT HEAD SCREWS. REMOVE UNIT. CAUTION!! OPTICS MUST REMAIN IN FORWARD POSITION.
9. DECKER CONTROL	REACH THRU ACCESS HOLE IN SPECTROGRAPH MOUNTING FACE. LOOSEN NEAR COUPLING AND SLIDE OUTWARD TO CLEAR INNER SHAFT.
10. GRATING DRIVE SHAFT	REACH THRU ACCESS HOLE IN SPECTROGRAPH MOUNTING FACE. LOOSEN FAR COUPLING AND SLIDE OUTWARD TO CLEAR INNER SHAFT.
11. GRATING AXLE DRIVE (2)	REMOVE (4) SCREWS (2 PLACES). REMOVE 2 MOTORS.
12. FRONT MOUNTING DISC AND ATTACHED EQUIPMENT	REMOVE 6 SCREWS AND SEPARATE FRONT MOUNTING DISC FROM MAIN BODY JUST FAR ENOUGH TO ALLOW ELECTRICAL CONNECTIONS INSIDE TO BE DISCONNECTED. SEPARATE DISC AND MAIN BODY COMPLETELY.

REASSEMBLY

CARE MUST BE TAKEN TO EXACTLY REVERSE ABOVE PROCEDURE DURING REASSEMBLY

TOLERANCES UNLESS OTHERWISE NOTED:		FRACTIONAL FABRICATION		KITT PEAK NATIONAL OBSERVATORY	
UP TO 10" & 1/16"	± .005	UP TO 10" & 1/16"	± .005	OPERATED BY THE ASSOCIATION OF UNIVERSITIES FOR RESEARCH IN ASTRONOMY, INC.	
10" TO 50" & 1/8"	± .005	10" TO 50" & 1/8"	± .005	UNDER CONTRACT WITH NATIONAL SCIENCE FOUNDATION	
50" & OVER & 1/4"	± .005	50" & OVER & 1/4"	± .005	NAME: 84" TELESCOPE - CASSEGRAIN SPECTROGRAPH	
MACHINING		MACHINING		SCALE: 3" = 12"	
UP TO 18" & .015"	± .005	UP TO 18" & .015"	± .005	UNCOUPLING PROCEDURE	
18" TO 50" & .020"	± .005	18" TO 50" & .020"	± .005	DRAWING NUMBER: 2028.01-E 3	
50" & OVER & .025"	± .005	50" & OVER & .025"	± .005	REV. 3	
UNLESS OTHERWISE NOTED SURFACES MARKED V TO HAVE V FINISH		UNLESS OTHERWISE NOTED SURFACES MARKED V TO HAVE V FINISH		APPROVED BY: DATE: 10/28/66	

REF. FILE 2090

FOR ASSEMBLY SEE 2028.01-E1